

RWE Renewables UK Dogger Bank South (West) Limited

RWE Renewables UK Dogger Bank South (East) Limited

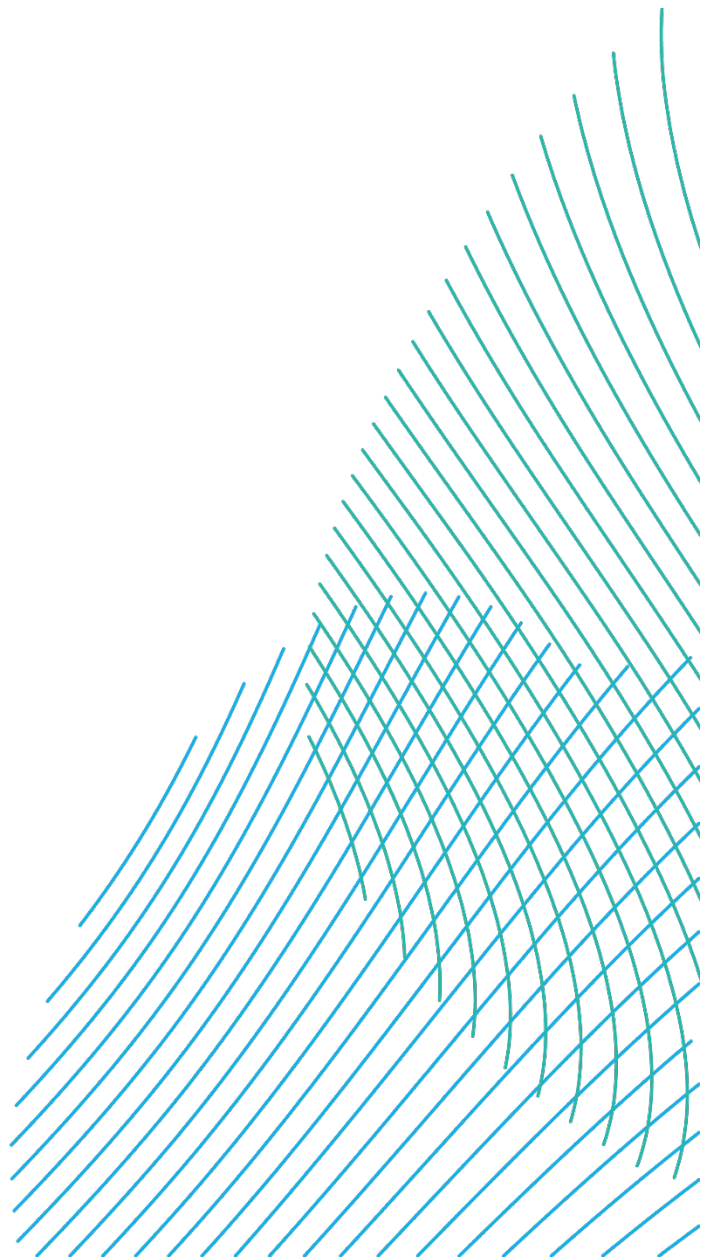
Dogger Bank South Offshore Wind Farms

**Location Plan (Offshore)
Volume 2**

June 2024

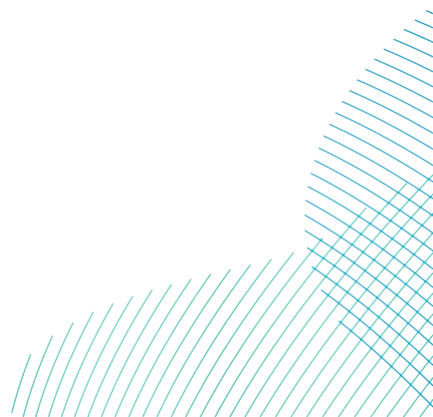
**Application Reference: 2.1
APFP Regulation: 5(2)(j)(i)
Revision: 01**

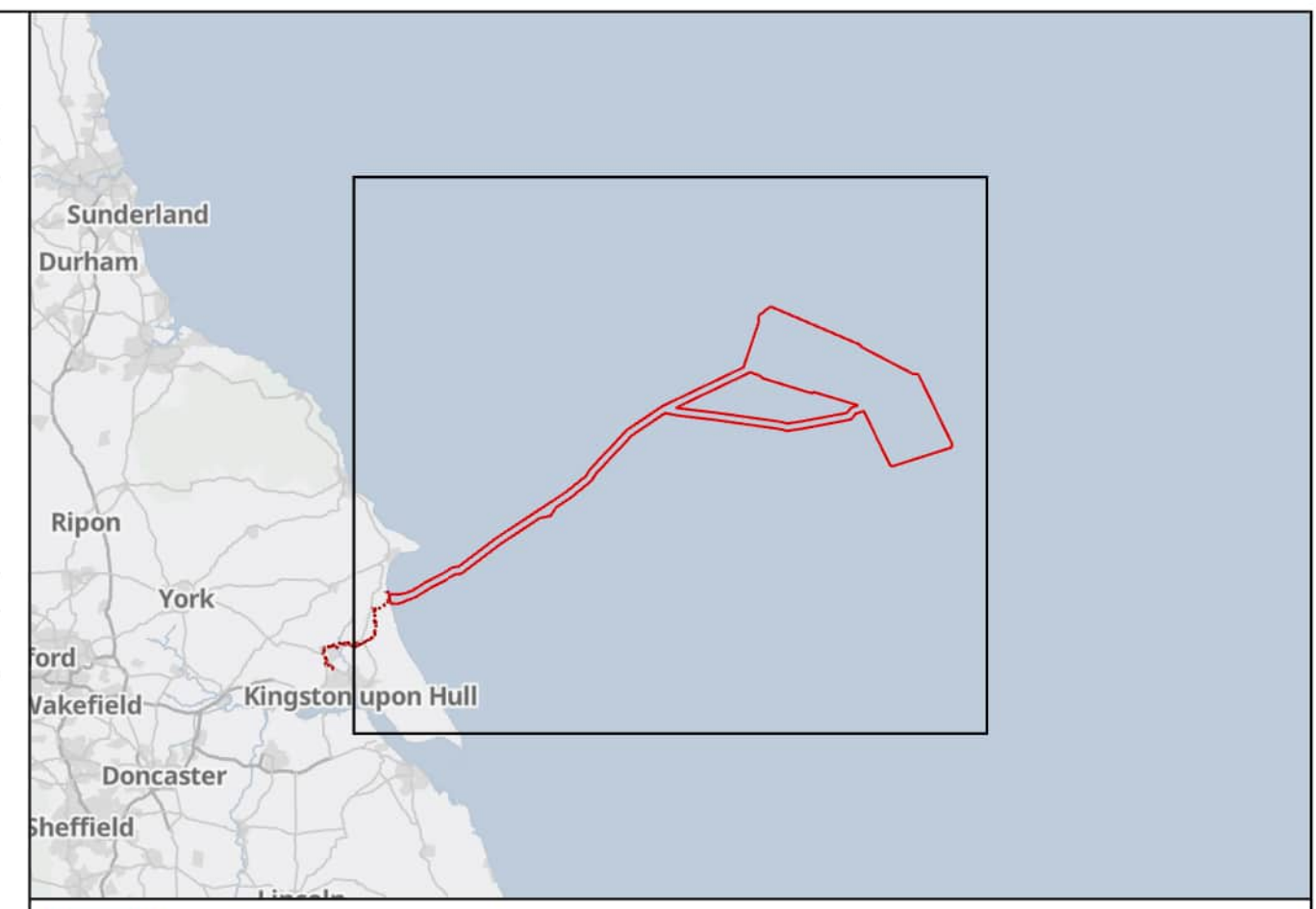
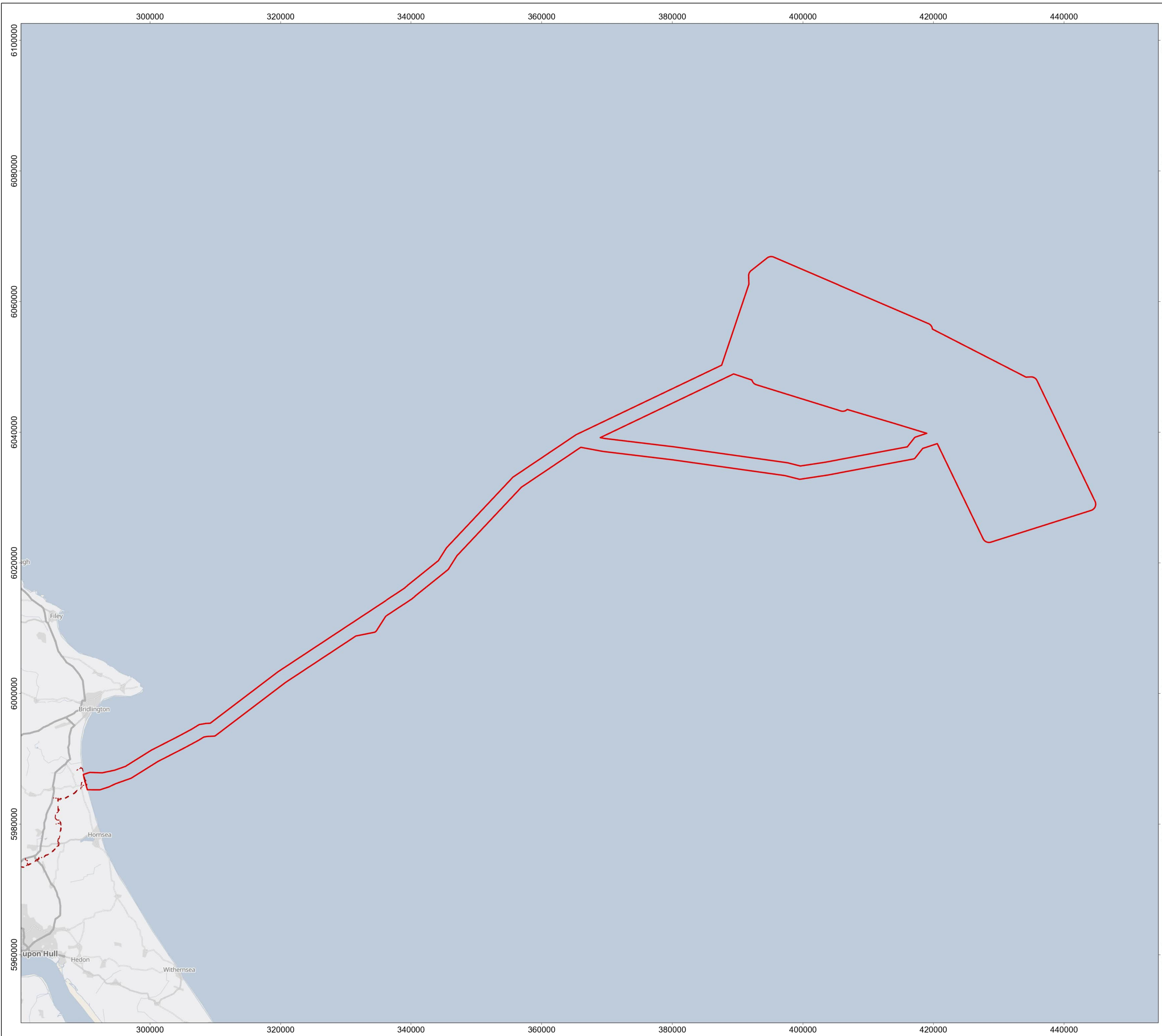
Unrestricted





Company:	RWE Renewables UK Dogger Bank South (West) Limited and RWE Renewables UK Dogger Bank South (East) Limited	Asset:	Development		
Project:	Dogger Bank South Offshore Wind Farms	Sub Project/Package:	Consents		
Document Title or Description:	Location Plan (Offshore)				
Document Number:	005028742-01	Contractor Reference Number:	PC2340-RHD-OF-ZZ-DR-Z-0540		
<p><i>COPYRIGHT © RWE Renewables UK Dogger Bank South (West) Limited and RWE Renewables UK Dogger Bank South (East) Limited, 2024. All rights reserved.</i></p> <p><i>This document is supplied on and subject to the terms and conditions of the Contractual Agreement relating to this work, under which this document has been supplied, in particular:</i></p> <p>LIABILITY</p> <p><i>In preparation of this document RWE Renewables UK Dogger Bank South (West) Limited and RWE Renewables UK Dogger Bank South (East) Limited has made reasonable efforts to ensure that the content is accurate, up to date and complete for the purpose for which it was contracted. RWE Renewables UK Dogger Bank South (West) Limited and RWE Renewables UK Dogger Bank South (East) Limited makes no warranty as to the accuracy or completeness of material supplied by the client or their agent.</i></p> <p><i>Other than any liability on RWE Renewables UK Dogger Bank South (West) Limited and RWE Renewables UK Dogger Bank South (East) Limited detailed in the contracts between the parties for this work RWE Renewables UK Dogger Bank South (West) Limited and RWE Renewables UK Dogger Bank South (East) Limited shall have no liability for any loss, damage, injury, claim, expense, cost or other consequence arising as a result of use or reliance upon any information contained in or omitted from this document.</i></p> <p><i>Any persons intending to use this document should satisfy themselves as to its applicability for their intended purpose.</i></p> <p><i>The user of this document has the obligation to employ safe working practices for any activities referred to and to adopt specific practices appropriate to local conditions.</i></p>					
Rev No.	Date	Status/Reason for Issue	Author	Checked by	Approved by
01	June 2024	Final for DCO Application	RHDHV	RWE	RWE





Offshore Order Limits
 Onshore Order Limits

MAP NOTES / DATA SOURCES:
 Contains OS data © Crown Copyright and database right 2023
 Contains data from OS Zoomstack
 Not to be used for Navigation.

PROJECT TITLE
Dogger Bank South Offshore Wind Farms
 DRAWING TITLE
Location Plan (Offshore)

DRAWING NUMBER: PC2340-RHD-OF-ZZ-DR-Z-0540			PAGE NUMBER: Page 1 of 1		
VER	DATE	REMARKS	DRAW	CHEK	APRD
0.1	19/10/2023	First Issue	SB	CC	RF
0.2	22/11/2023	Second Issue	SB	CC	RF
0.3	12/12/2023	Third Issue	SB	CC	RF
0.4	02/01/2024	Fourth Issue	SB	CC	RF

SCALE 1:300,000 PLOT SIZE A1
 DATUM WGS 1984 VERTICAL REF N/A
 PRJ WGS 1984 UTM Zone 31N

